



ARRIVING IN SOUTH AFRICA

All travellers arriving in South Africa at land, sea or air ports of entry are required to pass through immigration control, a service offered by the South African Department of Home Affairs, on arrival and before collecting their baggage. Thereafter they have to pass through customs control which falls under the auspices of the South African Revenue Service (SARS).

Travellers with goods to declare must complete a Traveller Card and make a verbal declaration of their goods to a Customs officer, who will then generate a Traveller Declaration (TRD1).

Baggage may be X-rayed or examined by Customs officers to detect dutiable, restricted or prohibited goods and you may be questioned. Should travellers be found to be carrying undeclared, restricted or prohibited goods they could be fined or face prosecution.



TRAVELLER'S GUIDE

Customs requirements when entering and leaving South Africa

PROHIBITED AND RESTRICTED GOODS

Prohibited goods



It is illegal to bring in the following prohibited goods to South Africa:

- **Narcotics:**
All narcotic and psychotropic substances, as well as habit-forming drugs such as cannabis, heroin, cocaine, Mandrax, Ecstasy and any paraphernalia relating to their use.
- **Firearms, weapons and ammunition:**
Fully automatic, military and unnumbered weapons, explosives and fireworks and weapons of mass destruction
- **Poison and other toxic substances**
- **Cigarettes** with a mass of more than 2kg per 1000
- Goods to which a trade description or trademark is applied in contravention of any Act (for example, counterfeit goods)
- Unlawful reproductions of any works subject to copyright, and
- Prison-made and penitentiary-made goods.

Goods you have to declare

Certain goods may only be imported if you are in possession of the necessary authority/



permit and these have to be declared on arrival. A few examples of the goods in question are listed here for your information.





Currency

South African bank notes in excess of R25 000, gold coins, coin and stamp collections and unprocessed gold.

Endangered plants and animals

Species of plants or animals that are listed as endangered, whether they are alive or dead. The restriction includes any parts of and articles made from them.

Food, plants, animals and biological goods

All plants and plant products, such as seeds, flowers, fruit, honey, margarine and vegetable oils. All animals, birds, poultry and products thereof, for example, dairy products, butter and eggs.

Medicines

Travellers are allowed to bring in no more than three months' supply of pharmaceutical drugs and medicines for their personal use. All other pharmaceutical drugs and medicines have to be declared and have to be accompanied by a letter or certified prescription from a registered physician.

Note: If you are in any doubt whether any goods that you intend to bring in are restricted, please contact your nearest South African Embassy/High Commission abroad or the nearest Customs office in South Africa. A list of Customs offices can be found on the SARS website: www.sars.gov.za.

A full list of Prohibited and Restricted goods is also available on the SARS website (www.sars.gov.za) by going to All Publications > Prohibited and Restricted Imports and Exports.

TRAVELLER'S GUIDE

Customs requirements when entering and leaving South Africa

DUTY-FREE ALLOWANCES

The following goods may be imported into South Africa without the payment of Customs duty and Value-Added Tax (VAT):

Consumable goods in accompanied baggage

Goods falling within the following allowances may be imported without the payment of Customs duty and VAT as accompanied baggage. Crew members, including the master of a ship and the pilot of an aircraft, are only entitled to this rebate provided such members are returning to South Africa permanently.

- No more than 200 cigarettes and 20 cigars per person.
- No more than 250g of cigarette or pipe tobacco per person.
- No more than 50ml perfumery and 250ml eau de toilette per person.
- No more than 2 litres of wine per person.
- No more than 1 litre in total of spiritous and other alcoholic beverages per person.



Persons under 18 years of age may claim duty-free allowances on goods imported by them, with the exception of alcohol and tobacco products, whether or not they are accompanied by their parents or guardians and provided that it is for their personal use.

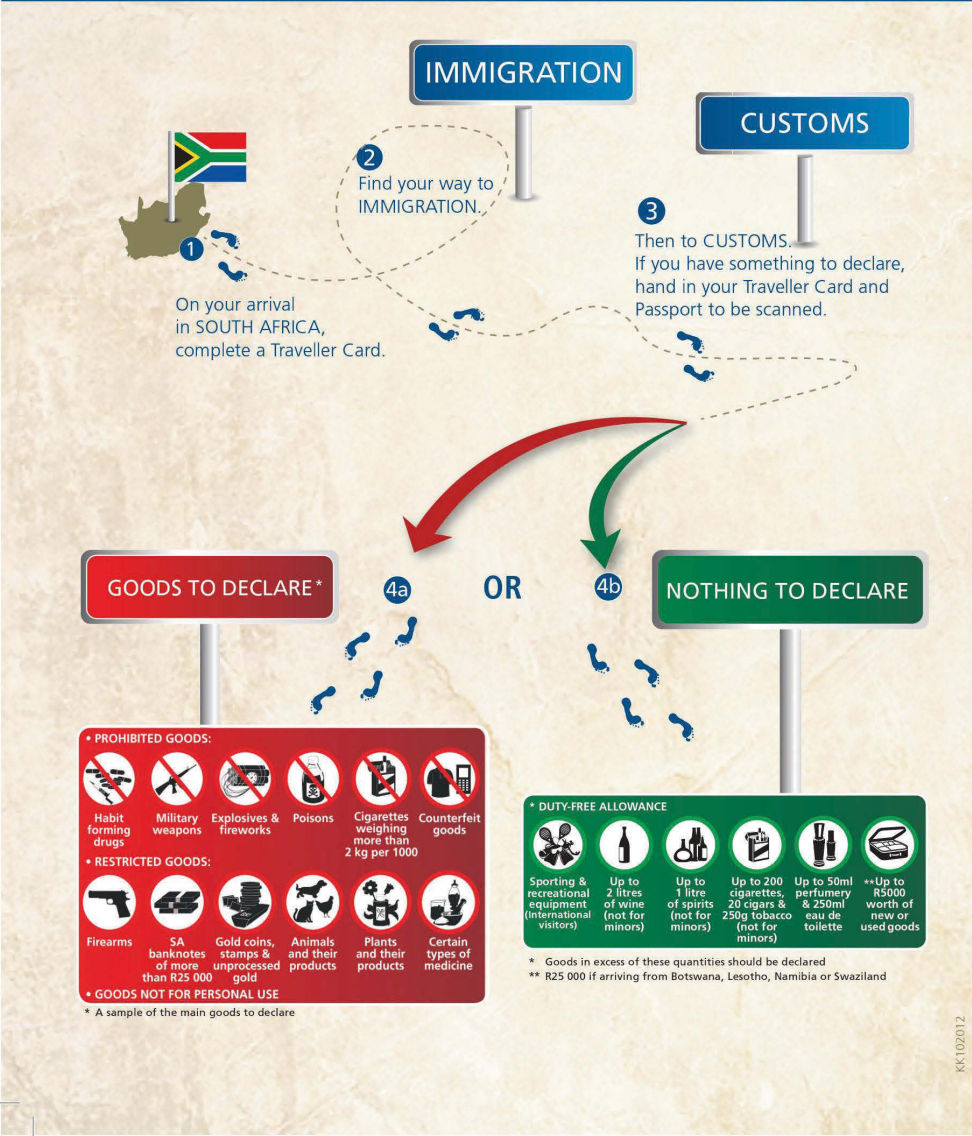
Personal effects, sporting and recreational equipment

Visitors may bring in new or used personal effects, sporting and recreational equipment either as accompanied or unaccompanied baggage, for own use during their visit.

Please note that you may be required to lodge a cash deposit to cover the potential duty/tax on expensive articles pending the re-exportation of these items.



Follow these easy steps and enjoy the magic of South Africa!



Customs information for TRAVELLERS

SARS
At Your Service